



Specifications

Lighting specifications

Light source	LED 8-24 x High power LED
Gross Luminous Flux	Max. 5.300 lm
Net Luminous Flux	Max. 4.800 lm
Color Temperature (CCT)	3000 / 4000 kelvin
Color Rendering Index (CRI)	Ra ≥ 70 / Ra ≥ 80
Optical Technique	Direct Lens System

Electrical specifications

Appliance class	Class I / II
System power	Max. 50 W
Power factor	cos phi > 0,95 @ full load (100%)
Operating Voltage	220-240 V AC, 50/60 Hz
Driver	Philips Xitanium / Osram / Inventronics
Dimming options	1-10 V / DALI / DALI 2.0 / Line Switch / CLO / other upon request

Usage and Installation

Operating Temp.	-20°C - +55°C
Lifespan	100.000 hours / L95B10 @ Ta=30°C
Mounting size	48 mm / 60 mm / 76 mm
Tilting angles	On pole: 1" adapter (type 2) / special adapter (type 3) - both adapters included in box. Suspension: with adapter - to be ordered separately.

Physical details

Material	Aluminum
Material Cover	Curved clear polycarbonate
Housing Colour	RAL 6009 glossy / Other colours upon request
Weight	9 kg

Protection

Impact Resistance	IK09
Ingress Protection	IP66
Coating Class	C3 / C4

Quality and Certification

CE / ENEC

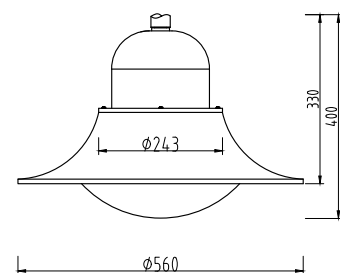
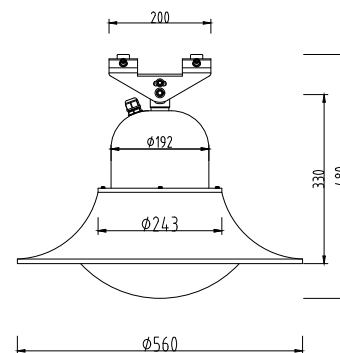
Country of origin

The Netherlands

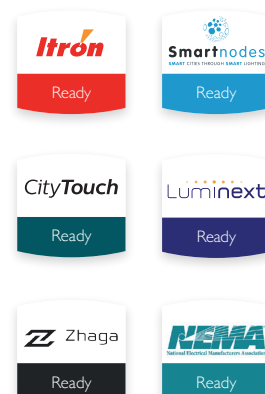
Revision date

06/01/2023

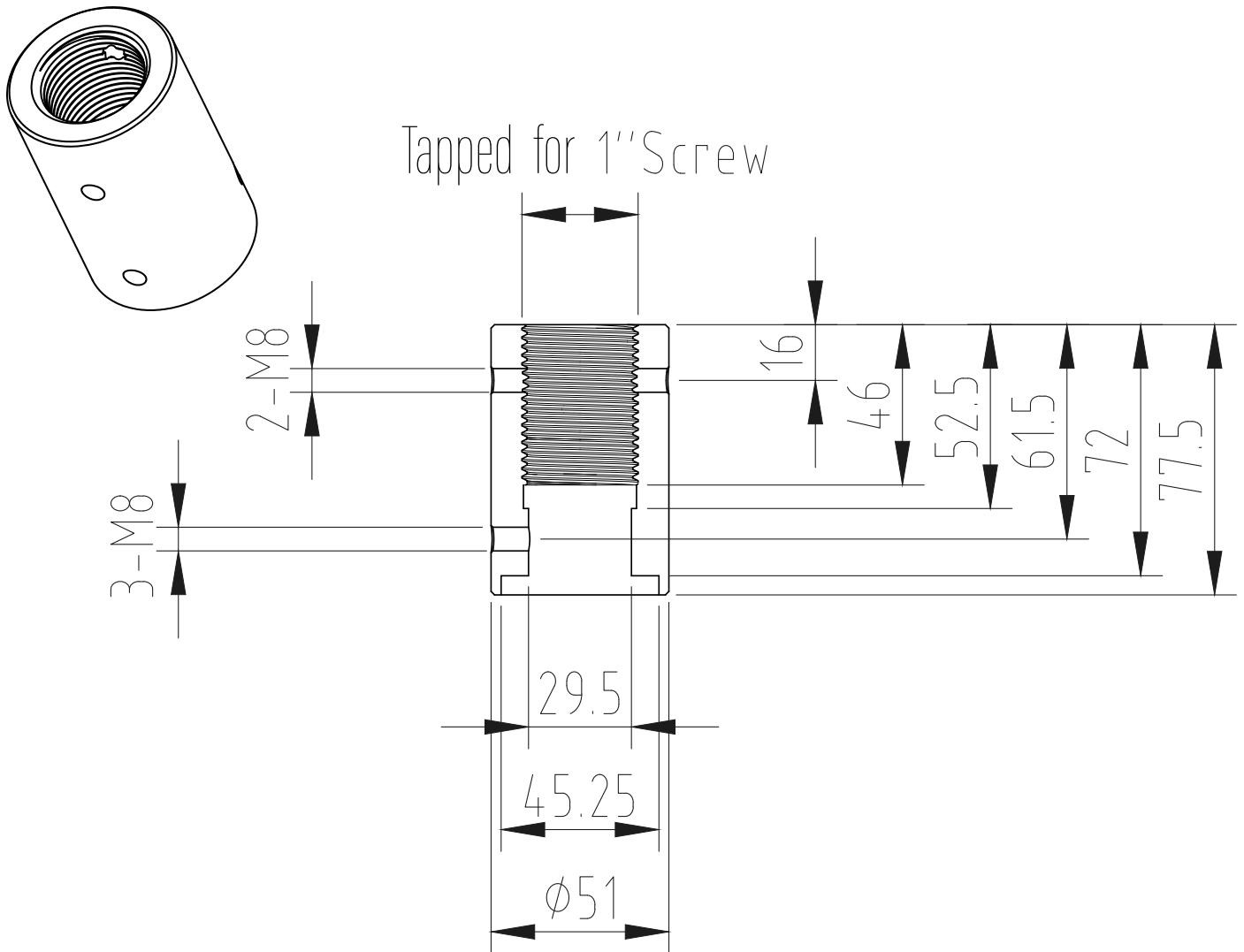
Dimensions



Smart Systems



Dimensions - Type 2



Dimensions - Type 3

